

Clinical Image

Elderly Patient with Lemmel Syndrome

Akihiro Tajima^{1*} and Hidekazu Kurata²¹Department of Gastroenterology, Dokkyo Medical University, Japan²Department of Gastroenterology, Tochigi Medical Center Shimotsuga General Hospital, Japan

CLINICAL IMAGE

92 year old female without dementia had abdominal pain. The symptom was attenuated with enema. Five days later, she was admitted to our hospital with icterus. She denied abdominal pain. The temperature was 36.7°C. Labs were as follows; WBC 4600/ μ l, CRP 3.8 mg/dl, T-Bil 5.20 mg/dl, AST 136 IU/L, ALT 205 IU/L, ALP 546 IU/L. MRCP (Figure 1) and abdominal CT (Figure 2) are shown. MRCP and abdominal CT demonstrated stenosis of distal common bile duct due to extra-compression

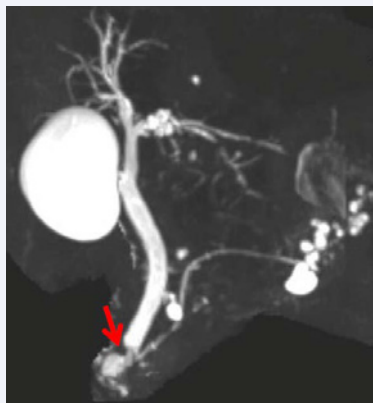


Figure 1 MRCP demonstrated stenosis of distal common bile duct due to extra-compression of periaampullary diverticulum (arrow).



Figure 2 Abdominal CT did not demonstrate mass lesions around distal CBD and wall thickening of CBD. Periaampullary duodenal diverticulum was visualized (arrow).

*Corresponding author

Akihiro Tajima, Department of Gastroenterology, Dokkyo Medical University, 880 Kitakobayashi, Mibu, Shimotsuga, Tochigi, 321-0293, Japan, Tel: 81-282-87-2147; Fax: 81-282-86-7761; Email: atajima@dokkyomed.ac.jp

Submitted: 02 January 2014

Accepted: 06 January 2014

Published: 08 January 2014

Copyright

© 2014 Tajima et al.

OPEN ACCESS

of periaampullary diverticulum. Lemmel syndrome is defined that periaampullary duodenal diverticulum often compressed the distal common bile duct and prevented the secretion of the bile [1,2]. Sulbactam Sodium, Cefoperazone Sodium, 2g per day was administered for 5 days for attenuated acute cholangitis. T-Bil decreased to 3.95 mg/dl. We performed ERCP on 5th day of admission for further exploration. Since small CBD (common bile duct) stone, 5mm in diameter, was visualized during ERCP, ERBD (endoscopic retrograde biliary drainage) stent was inserted after EST (endoscopic sphincterotomy). 5 days later, CBD stone was extracted with EML (endoscopic mechanical lithotripsy) after removing ERBD stent. T-Bil further decreased to 1.8 mg/dl, when the patient was discharged. In this case, distal cholangiocarcinoma could be one of the differential diagnosis [3]. However, we did not recognize mass lesions around distal CBD and wall thickening of CBD in CT. The flow of contrast media during ERCP through distal stenotic CBD was not disturbed. Indication of endoscopic diagnosis and therapy in elderly patients is difficult. In this patient, ERCP with EST and EML was definitely mandatory procedure.

REFERENCES

1. Lemmel G. Die Klinische Bedeutung der Duodenal Divertikel. Arch Verdauungskrht 1934; 46: 59-70.
2. Ono M, Kamisawa T, Tu Y, Naoto Egawa. MRCP and ERCP in Lemmel Syndrome. JOP. J Pancreas (Online) 2005; 6: 277-278.
3. Rizvi S, Gores GJ. Pathogenesis, diagnosis, and management of cholangiocarcinoma. Gastroenterology. 2013; 145: 1215-1229.