

## Research Article

# Chrono-Immunotherapy with Interleukin-2 for Treatment of Metastatic Renal Cell Carcinoma: A Phase I-II Study

Giovanni Lo Re<sup>1</sup>, Davide Adriano Santeufemia<sup>1</sup>, Giovanni Maria Fadda<sup>2</sup>, Renato Talamini<sup>3</sup>, Wally Marus<sup>4</sup>, Paolo Doretto<sup>5</sup>, Alessandra Falda<sup>5</sup>, Gian Luigi Nicolosi<sup>6</sup>, Antonio Garbeglio<sup>7</sup>, Sandro Sulfaro<sup>4</sup> and Salvatore Tumolo<sup>1</sup>

<sup>1</sup>Oncology Unit, Santa Maria degli Angeli Hospital, Italy

<sup>2</sup>Oncology Unit, Cesare Zonchello Hospital, Italy

<sup>3</sup>Unit of Epidemiology and Biostatistics, Centro di Riferimento Oncologico, Italy

<sup>4</sup>Pathology Unit, Santa Maria degli Angeli Hospital, Italy

<sup>5</sup>Clinical Pathology Unit, Santa Maria degli Angeli Hospital, Italy

<sup>6</sup>Cardiology Unit, Santa Maria degli Angeli Hospital, Italy

<sup>7</sup>Urology Unit, Santa Maria degli Angeli Hospital, Italy

**\*Corresponding author**

Giovanni Lo Re MD, Oncology Unit, Via Montereale 24, 33170, Pordenone, Italy, Tel: +390434399788; Fax: +390434399187; Email: giovanni.lore@hotmail.it

Submitted: 09 August 2014

Accepted: 01 November 2014

Published: 03 November 2014

ISSN: 2333-6714

Copyright

© 2014 Re et al.

OPEN ACCESS

**Keywords**

- Interleukin-2
- Metastatic renal cancer
- Chrono-infusion

**Abstract**

**Background:** IL-2 represents yet an alternative to targeted therapy for metastatic renal cancer (mRCC) treatment. Prior studies have suggested high dose bolus as the preferred administration modality. However, its use is limited by toxicity and the search for an alternative modality is justified. In order to reduce toxicity we evaluated feasibility, dose limiting toxicity (DLT) and activity of IL-2 chrono-infusion in mRCC.

**Methods:** Patients (pts) with mRCC were treated with IL-2 which was administered with an escalated dose in 8 hour chrono-infusion (peak 1 am, 9am, and 5pm) from 2 MU/m<sup>2</sup> according to Fibonacci scale.

**Results:** 22 pts were enrolled. 3 pts entered each Level I to V and 7 entered VI. Grade 3-4 toxicities were reported only in 4 cases (2 hypotension and renal, 1 diarrhoea) on the VI Level. DLT was 18.6 MU/m<sup>2</sup>. Overall response rate was 14% (23% in a good-intermediate risk group). Median PFS and OS were 4.5 and 14.5 months respectively. In an univariate analysis dose level, PS, gender, cD3, cD4, cD8 counts were statistically significant for OS.

**Conclusion:** IL-2 chrono-infusion appears safe in a standard care unit, moderately toxic and active in mRCC.

**ABBREVIATIONS**

IL-2: Interleukin-2; Ifn $\alpha$ : Interferon Alfa.; Mrcc: Metastatic Renal Cell Carcinoma; CTLA-4: Cytotoxic T Lymphocyte-Associated Antigen-4; LAK: Lymphokine-Activated Killer.; FU: Fluorouracil; TNF-Alpha: Tumor Necrosis Factor Alfa; IL-1 Beta Interleukin-1 Beta; IL-6: Interleukin-6.; ECOG PS: ECOG Performance Status; CR: Complete Remission; PR: Partial Remission; SD: Stable Disease; PD: Progression Of Disease; DLT: Dose Limiting Toxicity; RR: Response Rate; PFS Progression Free Survival; OS Overall Survival; NCI (CTCAE: Common Terminology Criteria Version 3.0 Grading System; DCR: Disease Control Rate;

AM: Ante-Meridian; PM: Post-Meridian; MSKCC: Memorial-Sloan-Kettering-Cancer Center; CCF: Cleveland Clinical Foundation; T-Reg: T Cell Regulator

**INTRODUCTION**

Renal cell carcinoma (RCC) represents 5.2% and 2.8% of all cancers in men and women respectively [1].

Systemic cytokines IL-2 or interferon- $\alpha$  (IFN- $\alpha$ ) long-time represented the standard of care for metastatic RCC (mRCC) [2]. In the cytokines era median overall survival for mRCC patients was around 1 year and only 10% of such patients survived past 5 years

[3]. The last few years have seen a steep rise in pharmacological research in mRCC, mainly due to the introduction of novel agents targeting angiogenesis and signal transduction pathways, such as tyrosine kinase and rapamycin inhibitors [4-9], which have significantly improved patient outcomes. The availability of new agents and consequently the sequential use of targeted therapies can result in a progression-free survival of up to 27 months, and an overall survival of 40 months [10], that represents an impressive progress. At present, drugs such as Sunitinib [4], Pazopanib [8], Bevacizumab [9], Sorafenib [5], Everolimus [6], Temsirolimus [7], and recently Axitinib [11], are considered standard treatments for RCC. Despite this, treatment with targeted agents rarely achieves complete responses and most patients (pts) ultimately develop resistance to therapy [2], so a definitive cure is not provided. It is well known that some pts treated with cytokines, especially with high-dose IL-2 experience durable complete responses up to 2 years [12]. Recently, in patients with other tumour types, an impressive comeback of the use of immunotherapeutic agents has been associated with substantial survival improvements. In a phase III trial of advanced or metastatic melanoma, Ipilimumab, an antibody against cytotoxic T lymphocyte-associated antigen-4 (CTLA-4) [13], showed remarkable improvement in overall survival. Similarly, in a placebo-controlled phase III trial of patients with castration-resistant prostate cancer, sipuleucel-T, an autologous cellular vaccine, improved median survival [14]. The proof-of-principle that immunotherapy has the potential to improve outcomes in patients with advanced cancer and the fact that targeted agents have limited capacity to produce durable complete responses [15], suggests continuing the investigation of the use of immunotherapy in mRCC. Either new immunotherapy drugs or different strategies of the use of older drugs are rationale options. The main concern in using immunotherapy has always been represented by the significant toxicity. At present biomarkers of response have yet to be identified to identify those patients who could respond and those who should avoid exposure to toxicity. Thus, despite the fact that high-dose IL-2 is still a valid therapeutic option, there is a general agreement that its use should be restricted to small subgroups of patients, namely young and fit pts only, who can probably better tolerate such therapy [2,12].

IFN alfa has shown higher response and survival compared to other drugs [16-19] and when added to nephrectomy in a randomized trial [20]. More recently, it resulted inferior to sunitinib<sup>4</sup>, Temsirolimus<sup>7</sup> or to its combination with Bevacizumab [8] in pivotal trials.

IL-2 is a pleiotropic protein produced by activated T lymphocytes and represents the most important growth factor for lymphokine-activated killer (LAK), T-helper cells, eosinophils and natural Killer (NK) cells [21-24]. In a US trial, high-dose IL-2 intravenous (IV) regimen (i.e. 600 to 720,000 IU / kg bolus t.i.d for 5 days/2 weeks), determined a 16% response rate (RR) and 7-9% long-term complete response (CR) [3]. However, the interim analysis, comparing high-dose versus low-dose bolus versus subcutaneous (SC) administration, did not indicate a significant benefit of high-dose IL-2 except for CR [25]. In Europe, a continuous IV infusion of IL-2 (18 MUI/m<sup>2</sup> for 5 days/2 wks) was investigated, initially obtaining 50% RR in 13/26 solid tumours, 8/16 of which were RCC and melanoma [26]. A French randomized study comparing IV or SC IL-2 plus IFN versus IFN

alone found no significant difference in RR and OS in unselected patients [27]. In the Atzpodien experience, SC IL-2 and IFN combined to Fluorouracil (FU), suggested promising RR and OS [28] but these results were not confirmed [29-31]. A randomized study comparing IFN-alfa versus combination therapy with IFN-alfa, IL-2 and fluorouracil revealed no difference in toxicity, activity and survival between the two arms [32]. In an attempt to modulate IL-2-related activity and toxicity, chronomodulation delivery has been investigated. Chronomodulation delivers drugs in a circadian rhythm, seeking to maximize dose-intensity and subsequent outcomes, while also attempting to minimize toxicity.

Few studies on more than 30 anticancer drugs analyzed different administration times. It is impressive to note that the difference in efficacy and incidence of adverse events for the same dose of the drugs could be even twofold when given at different times during the day or at night [33]. These observations suggested the study of chronomodulation in chemotherapy regimens [34] and several agents were found suitable for chronotherapy [35]. Chronomodulation is based on the interactions between the drugs and the human body that are modified by the circadian rhythm and can impact on cell growth and proliferation. The mechanisms of such complex nictemeral interaction with the immune and hormonal system and their environment are yet unclear. The master pace-maker of the physiological circadian rhythm is represented by the suprachiasmatic nucleus (SN) which is located in the anterior hypothalamus. SN is involved in homeostatic, behavioural and neuroendocrine functions and also in potentially tumour-modulating effects, because it rules processes with relevant impact for the neoplastic progression [17] such as cell-cycle gating, DNA repair, apoptosis, angiogenesis and immune function. Thus its dysregulation may be an important promoter and inducer of cancer [37]. A cross talking between paraventricular hypothalamus and SN is influenced by blood-borne signals, since pro-inflammatory cytokines determine depression or sleep disorders, moreover a relationship between acute/chronic stress, endogenous/therapeutic glucocorticoid concentration and immune activation is described [38-45]. The negative impact of circadian variations and stress, appears greater with TNF-alpha and IL-1 beta than IL-6 [46], explaining the significant reduction of IL-1 after the first phase of sleep [43].

The synchronization of endogenous IL-2 by IL-1 [47] may play an important role in an immunogenic tumour model such as RCC. As chrono-infusion allows the administration of concentrated doses of drugs and its modulation over time, this led us to study the use of chrono-modulated IL-2 and to evaluate the possible benefits of chrono-infusion by its interactions with immune and hormonal system in RCC

## MATERIALS AND METHODS

### Patient selection

Eligibility criteria include: age below 70 years, ECOG PS < 2, histological diagnosis of mRCC, measurable metastatic disease (NCIC criteria), adequate organs function (hemoglobin >10 g/dL white blood cells > 4000/mm<sup>3</sup>, neutrophil >1500/mm<sup>3</sup>, creatinine < 1.7 mg / dL (150 micromol / L), ALT < 2 x ULV, bilirubin <1.5 mg / dL x ULV, ECG and echocardiogram without any great abnormality and ejection fraction > 50%, written informed consent. Study was performed in accordance with the Declaration of Helsinki.

Pts who had received previous treatment with IL-2, IFN-alpha, targeted-therapy, chemotherapy and radiotherapy more than 6 weeks before were included.

Ineligibility criteria were represented by the presence of clinically active brain metastases and seizures, recent cardiac illness (heart failure, angina, myocardial infarction, and ventricular arrhythmia), major infections, contraindications to the use of vasopressor drugs (e.g dopamine), chronic corticosteroids use, and previous history of organ transplantation.

**Study design and treatment**

Primary objective: safety, dose limiting toxicity (DLT).

Secondary objective: correlation between therapy and hormonal and immunological order, response rate (RR), progression free survival (PFS) and overall survival (OS).

IL-2 was diluted in 5% glucose solution enriched with 13 ml of human albumin at 20% days was administered by venous port device. The dose of chronomodulated IL-2 (Figure 1) was made according to the 6 levels of the Fibonacci scale (Table 1). The cycle was repeated every 2 weeks x 4 cycles. If tolerability was good, objective response or stabilization (WHO) were obtained, further 4 cycles were delivered every 3 weeks. Duration of response, PFS and OS were evaluated from start of IL-2 to progression, death or last visit respectively.

Toxicity was assessed according to NCI Common Terminology Criteria version 3.0 grading system (CTCAE v3.0) [48]. The definition of DLT for the IV chrono-infusion of IL-2 was the occurrence of renal toxicity (oligo-anuria), hypotension, cardiac toxicity greater than G2, sensory or motor neurological toxicity > G1, or serious intolerance that contraindicate further treatment.

**Statistical analysis**

The study design provides for the allocation of 1 patient in each of the three pre-ordered chronomodulation times for each level of the Fibonacci scale (Table 1). After treatment of three pts/level, if no event of DLT occurred, we proceeded to the next level. If one DLT event has occurred, it was necessary to enter 3 other patients at the same level. If no DLT events were observed, the next level was entered. In the presence of two DLT events at any level, the dose escalation was blocked.

The calculation of the number of patients required for this Phase II was made by Simon’s method in two steps [49]. Whereas we wanted to obtain a 20% difference ( $p_1 - p_0 = 20%$ ) between the standard therapy ( $p_0 = 20%$ ) and the new therapy ( $p_1 = 40%$ ) and fixed the error  $\alpha = 0.05$  and  $\beta = 0.20$  ( $1 - \beta = 0.80$ ; power of the test), the number of patients required for the 1st step was 13. If response numbers were  $0 < 3$ , the study would be completed. On the contrary, the study continued up to the enrolment of 43 patients. The response numbers rejecting the null hypothesis (ineffective treatment) were to observe more 12 from 43 under treatment. Differences between discrete variables were analyzed using the chi-square or Fisher exact test for expected values  $< 5$  [50].

Differences between continuous variables were analyzed using the Mann-Whitney nonparametric test (for comparison of two independent samples). The results were considered statistically significant for values of  $p < 0.05$  (two-tailed test)

**RESULTS AND DISCUSSION**

From January 2005 to July 2009, 22 pts (Table 2) were enrolled in the study. 3 pts entered each in level I-V, 7 in level

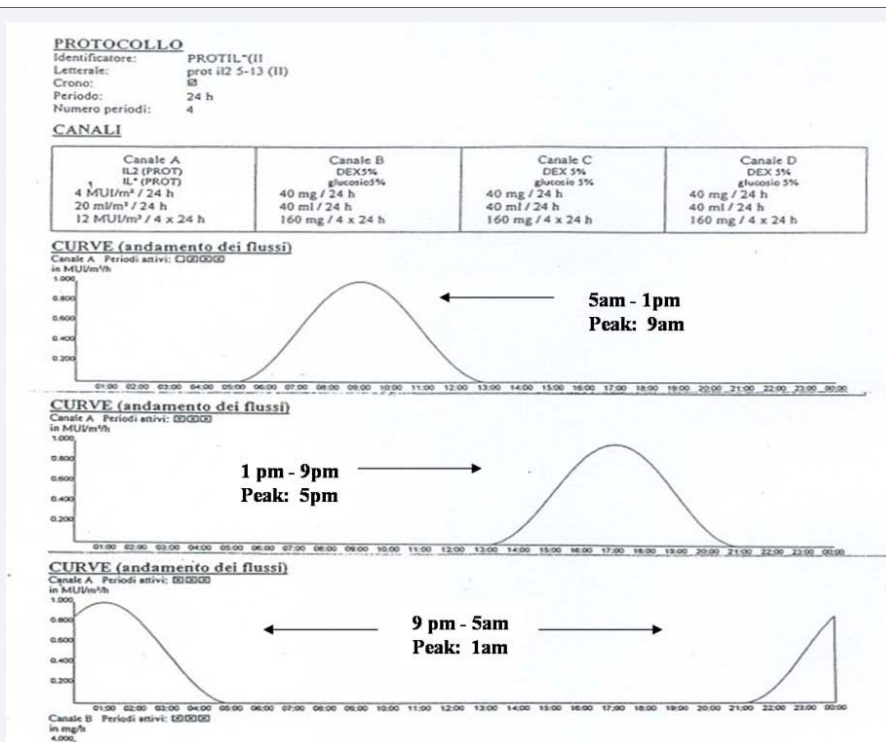


Figure 1 Three times (5am-1pm; 1pm-9pm; 9pm-5am) of chronotherapy; p: peak.

**Table 1:** Fibonacci scale of IL-2 dose.

Level	Time (9pm-5am) peak 1am	Time (5am-1pm) peak 9am	Time(1pm-9pm) peak 5pm	Dose (MUI/m <sup>2</sup> )	% increase
I	1	1	1	2	100
II	1	1	1	4	67
III	1	1	1	6,68	50
IV	1	1	1	10	40
V	1	1	1	14	33
VI	1	1	1	18,6	

**Table 2:** Patients characteristics.

Factors	N (range)
SEX M/F	16/06
MEDIAN AGE	68 (44-74)
MEDIAN PS (range)	1 (0-1)
Nefrectomy (yes:no)	20:2
Histology (CC: sarcomatoid)	20:2
METASTASES SITES	16
lung	4
liver	5
lymphnodes	10
bone	3
soft tissue	9
other	8
N° metastatic sites	5
1	9
2	6
> 3	7
Motzer modified score	9
0-1	14
2	8
3	2
naive pts	6
pre-treated pts	4
immunotherapy	
targeted therapy	
chemoimmunotherapy	

VI. 106 cycles were administered. Median relative dose intensity (MRDI) were 98.5%, 91%, 89%, 85%, 88%, 65% for Level I, II, III, IV, V, VI respectively.

All pts experienced flu-like syndrome, but only 4 pts had G3-4 toxicity (2 hypotension, 1 renal and 1 diarrhoea) on Level VI. One out of 4 of pts pre-treated with Sunitinib experienced myocardial infarction after a few months of IL-2 interruption, without significant impact on further therapy. Overall, no cardiac toxicity in terms of ejection fraction reduction was detected. DLT was 18.6 MUI /m<sup>2</sup>.

Out of 22 treated pts 1 CR, 2 PR, 9 SD, 10 PD were reported. The overall response (OR) and disease control rate (DCR) were 14% and 54% respectively.

2 patients obtained mixed response (Level VI) (supraclavicular nodes CR and liver PD; gastric PR, lung and adrenal PD in 1 pt respectively). In the good-intermediate risk group, RR and DCR was 23% and 69%. Median PFS and OS (Figure 2) were 4.5 and 14.5 months respectively.

In a univariate analysis (Table 3) age (< 65 y vs >65 y), Motzer score (0-2 vs. 3) increase/reduction of cD19, cD16, HLA-DR, cD4/cD8, increase/reduction of prolactine, reduction/increase of ACTH-Cortisol were not statistically significant for OS. However a survival trend (Figure 3) was detected in the peak treatment

(1:00 AM and 9:00 AM versus 5:00 PM) groups, Motzer groups, cD16 and cD19 counts, cD4/cD8, Prolactine, ACTH and cortisol. Conversely, dose levels (4-6 vs. 1-3), PS (0 vs. 1-2), gender (male vs. female) and cD3, cD4, cD8 count (gain vs. drop) were statistically significant for OS (Figures 4-9).

## DISCUSSION

Before the introduction of tyrosine kinase and rapamycin, IL-2 represented the cornerstone of mRCC treatment. However, its activity is not generalized to all histologies, as the presence of more than 50% of alveolar features without granular or papillary component has a greater probability of response to IL-2 [51], but no other predictive factors are yet known. A meta-analysis from retrospective studies on high dose IL-2 demonstrated that response was the strongest predictor of OS and more than "4 years" survival rate were 62% and 11% in responders and non responders respectively [52]. The low response rate to IL-2 suggests that, as seen for other kinds of immunotherapy, impact on survival can be a delayed effect of treatment and a 19% 5-year survival after HD IL-2 was recently reported [53]. According to the MSKCC [54] and CCF prognostic criteria [55] for RCC, all variables of the Motzer model, except ECOG PS, with adjunction of prior radiotherapy, lung, liver and retroperitoneal metastases, were validated as independent negative prognostic factors [55].

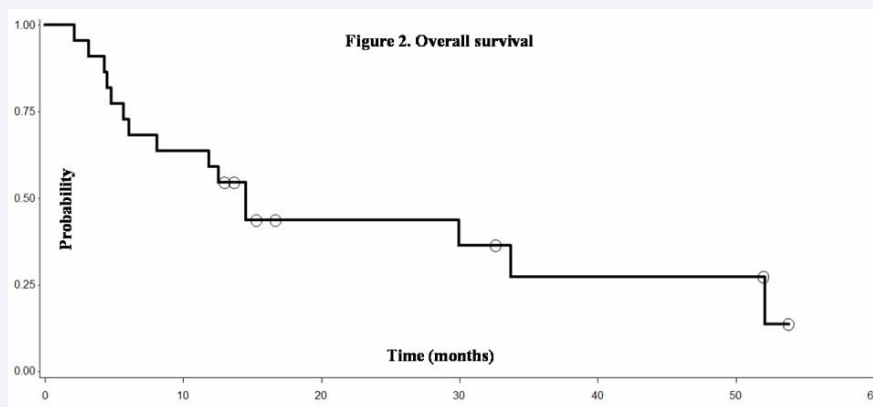


Figure 2 Overall Survival.

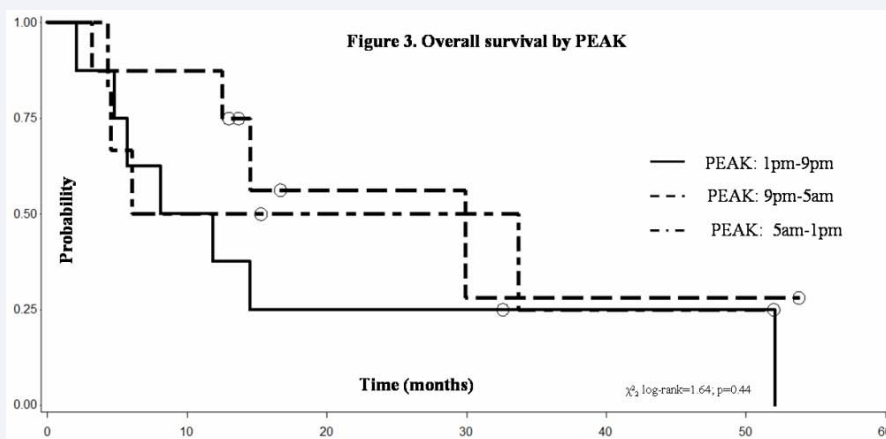


Figure 3 Correlation between time (9pm-5am, 5am-1pm, 1pm-9pm), related peak (1am,9am,5pm) and Overall Survival.

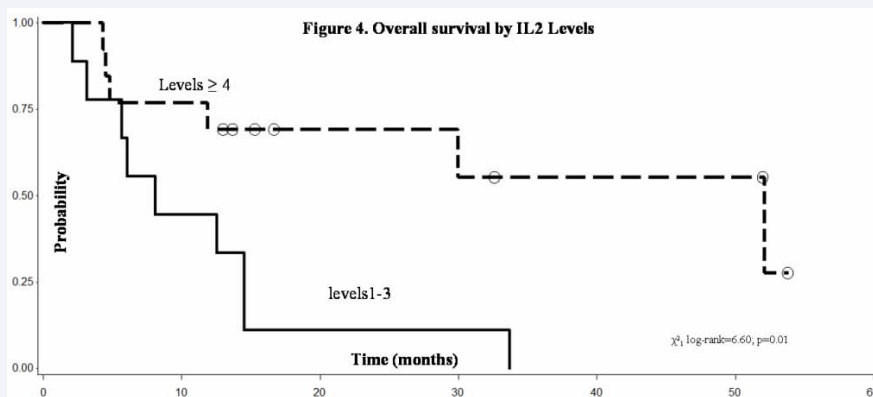


Figure 4 Correlation between Dose Level 1-3 (2-6.68 MUI/m2), 4-6 (10-18.6 MUI/m2 and Overall Survival.

Conflicting data on response to treatment and prognosis are available in patients with bone metastases [56-58] and their prognostic relevance is uncertain, also Aktins prospective model was not conclusive or helpful for the selection of potentially responsive patients [59,60].

IL-2 induced durable response in a few patients with favourable prognostic factors but, while high dose "bolus"

requires an expert team in an intensive therapy unit, continuous infusion or high dose subcutaneous IL-2 can be administered in a standard care unit, or even in out-patient setting. An expert side effect management aimed at performing an adequate treatment for dose intensity and overall duration is essential to achieve results in all treatment modalities.

This can be assumed, from the analysis of the Gore's study

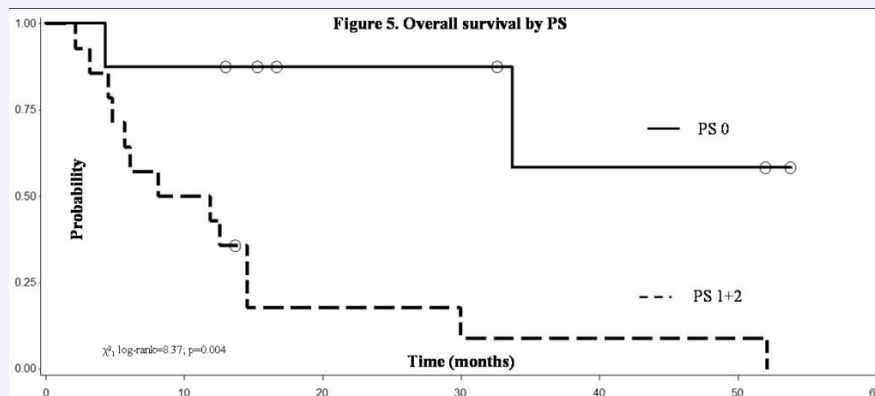


Figure 5 Correlation between ECOG PS and Overall Survival.

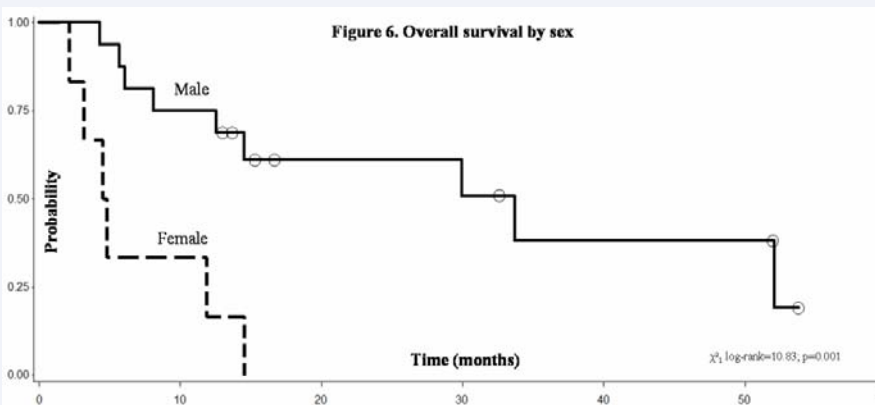


Figure 6 Correlation between gender and Overall Survival.

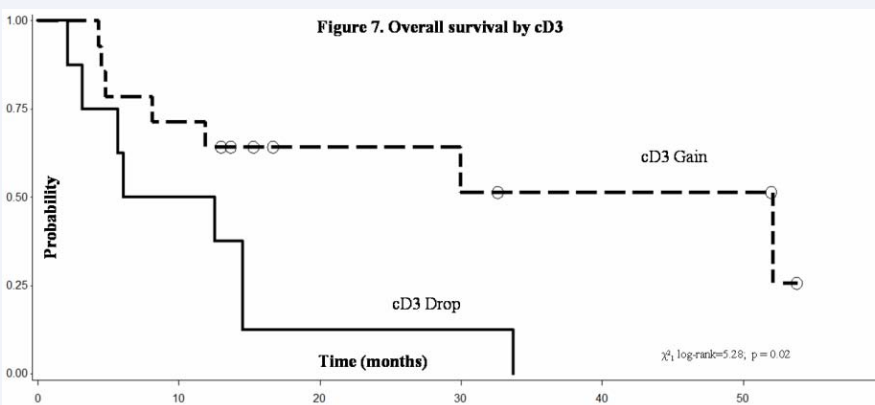


Figure 7 Correlation between cD3 outcome and Overall Survival.

[32], characterized by shortness and the low dose intensity of therapy than the Atzpodien one [28]. Nevertheless durable objective responses were reported in both studies.

Our patients treated with IL-2-IFN $\alpha$ -FU regimen [31] mainly underwent two cycles (and a further 2 cycles in responders). At evaluation after 13 years, 6 out of 40 treated patients were alive with disease. This emphasizes the value of IL-2 “per se” on survival with either high or low dose.

Then comes the need to use an easier administration modality and to explore new strategies to improve feasibility and results. Chronotherapy allows the Gaussian administration of drugs in a specific period of the day and it is suitable for its correlation with the hormonal and immune system.

The cyclical administration of 8 hours IL-2 offers the possibility to obtain a three times increase of dose intensity compared to the same exposure time of 24 hours c.i. It can be

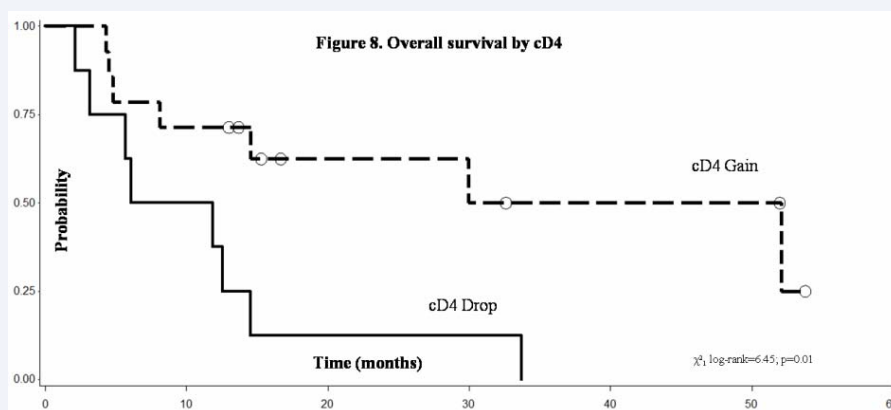


Figure 8 Correlation between cD4 outcome and Overall Survival.

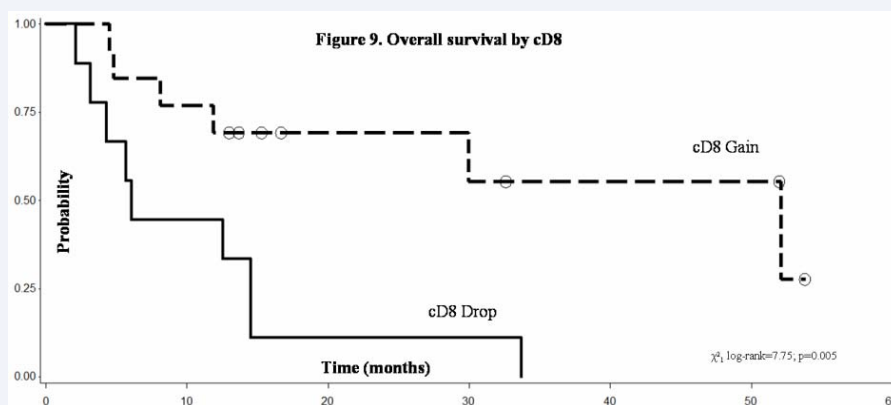


Figure 9 Correlation between cD8 outcome and Overall Survival.

likened to a “prolonged bolus”. To the best of our knowledge this is the first experience regarding chronoinfusion IL-2.

The prognostic value of gender on OS is interesting, this was significant also in chrono-chemotherapy of colorectal cancer [61]. Our study also confirms the prognostic value of lymphocytosis as in m-RCC [62]. We are able to detect the impact of antemeridian peak on survival in the short-medium term of observation. It suggests the importance of treatment timing and could be explained by effects on the immune system of hormonal changes over time. Remarkably, response to IL-2 is present also in case of unfavourable disease sites such as bone and liver. In fact a durable response was obtained in a patient with bone metastases pre-treated with Sunitinib and in a therapy-naive patient with liver, bone and lung metastases. This suggests the presence of immunological changes after Sunitinib. In fact an increase of lymphoid proliferation, Interferon- $\gamma$ , IL-4 producing T-cells is known, whereas T-reg and CD33+/HLA-DR- and CD15+/CD14- Myeloid-Derived Suppressor Cells (MDSC) were reduced [63,64]. Also these results confirm the value of HD IL-2 on improving outcome in patients with negative prognostic factors [57].

In our limited cohort of patients pre-treated with TK inhibitors, treatment has been feasible and less toxic than in Cho experience [65].

## CONCLUSION

From this study we found that IL-2 chronoinfusion therapy showed moderate toxicity, lower than standard infusion modality, feasibility in a standard care unit and activity in unselected patients with m-RCC; DLT was reached at level 6. MTD was placed at level V. The study continues as phase II.

In the light of new knowledges about the action mechanism of new immunotherapeutic agents and the clinical improvement in solid tumors, IL-2 could still play a role in its sequential use in mRCC

## ACKNOWLEDGEMENTS

We thank the patients, family members, nursing staff of the surgery unit that allowed the execution of this innovative program of care.

## REFERENCES

1. Ferlay J, Shin HR, Bray F. GLOBOCAN 2008, Cancer Incidence and Mortality Worldwide: IARC Cancer Base No. 10. Lyon, France: International Agency for Research on Cancer, 2010.
2. Escudier B. Emerging immunotherapies for renal cell carcinoma. *Ann Oncol.* 2012; 23 Suppl 8: viii35-40.
3. Rosenberg SA, Lotze MT, Muul LM, Chang AE, Avis FP, Leitman S,

- Linehan WM. A progress report on the treatment of 157 patients with advanced cancer using lymphokine-activated killer cells and interleukin-2 or high-dose interleukin-2 alone. *N Engl J Med.* 1987; 316: 889-897.
4. Motzer RJ, Hutson TE, Tomczak P, Michaelson MD, Bukowski RM, Rixe O, Oudard S. Sunitinib versus interferon alfa in metastatic renal-cell carcinoma. *N Engl J Med.* 2007; 356: 115-124.
  5. Escudier B, Eisen T, Stadler WM, Szczylik C, Oudard S, Siebels M, et al. Sorafenib in advanced clear-cell renal-cell carcinoma. *N Engl J Med.* 2007; 356: 125-134.
  6. Motzer RJ, Escudier B, Oudard S, Hutson TE, Porta C, Bracarda S, et al. Phase 3 trial of everolimus for metastatic renal cell carcinoma : final results and analysis of prognostic factors. *Cancer.* 2010; 116: 4256-4265.
  7. Shariat SF, Karam JA, Karakiewicz PI. Words of wisdom. Re: Temsirolimus, interferon alfa, or both for advanced renal-cell carcinoma. Hudes G, Carducci M, Tomczak P, Dutcher J, Figlin R, Kapoor A, Staroslawska E, Sosman J, McDermott D, Bodrogi I, Kovacevic Z, Lesovoy V, Schmidt-Wolf IG, Barbarash O, Gokmen E, O'Toole T, Lustgarten S, Moore L, Motzer RJ; Global ARCC Trial. *N Engl J Med.* 2007; 356:2271-81. *Eur Urol.* 2009; 55: 250-252.
  8. Escudier B, Pluzanska A, Koralewski P, Ravaud A, Bracarda S, Szczylik C, et al. Bevacizumab plus interferon alfa-2a for treatment of metastatic renal cell carcinoma: a randomised, double-blind phase III trial. *Lancet.* 2007; 370: 2103-2111.
  9. Motzer RJ, McCann L, Deen K. Pazopanib versus sunitinib in renal cancer. *N Engl J Med.* 2013; 369: 1970.
  10. Escudier B, Goupil MG, Massard C, Fizazi K. Sequential therapy in renal cell carcinoma. *Cancer.* 2009; 115: 2321-2326.
  11. Akaza H, Fukuyama T. Axitinib for the treatment of advanced renal cell carcinoma. *Expert Opin Pharmacother.* 2014; 15: 283-297.
  12. Sun M, Lughezzani G, Perrotte P, Karakiewicz PI. Treatment of metastatic renal cell carcinoma. *Nat Rev Urol.* 2010; 7: 327-338.
  13. Hodi FS, O'Day SJ, McDermott DF, Weber RW, Sosman JA, Haanen JB, et al. Improved survival with ipilimumab in patients with metastatic melanoma. *N Engl J Med.* 2010; 363: 711-723.
  14. Kantoff PW, Higano CS, Shore ND, Berger ER, Small EJ, Penson DF, et al. Sipuleucel-T immunotherapy for castration-resistant prostate cancer. *N Engl J Med.* 2010; 363: 411-422.
  15. Biswas S, Eisen T. Immunotherapeutic strategies in kidney cancer--when TKIs are not enough. *Nat Rev Clin Oncol.* 2009; 6: 478-487.
  16. [No authors listed]. Interferon-alpha and survival in metastatic renal carcinoma: early results of a randomised controlled trial. Medical Research Council Renal Cancer Collaborators. *Lancet.* 1999; 353: 14-17.
  17. Steineck G, Strander H, Carbin BE, Borgström E, Wallin L, Achtnich U, et al. Recombinant leukocyte interferon alpha-2a and medroxyprogesterone in advanced renal cell carcinoma. A randomized trial. *Acta Oncol.* 1990; 29: 155-162.
  18. Kriegmair M, Oberneder R, Hofstetter A. Interferon alfa and vinblastine versus medroxyprogesterone acetate in the treatment of metastatic renal cell carcinoma. *Urology.* 1995; 45: 758-762.
  19. Aass N, De Mulder PH, Mickisch GH, Mulders P, van Oosterom AT, van Poppel H, et al. Randomized phase II/III trial of interferon Alfa-2a with and without 13-cis-retinoic acid in patients with progressive metastatic renal cell carcinoma: the European Organisation for Research and Treatment of Cancer Genito-Urinary Tract Cancer Group (EORTC 30951). *J Clin Oncol.* 2005; 23: 4172-4178.
  20. Flanigan RC, Salmon SE, Blumenstein BA, Bearman SI, Roy V, McGrath PC, et al. Nephrectomy followed by interferon alfa-2b compared with interferon alfa-2b alone for metastatic renal-cell cancer. *N Engl J Med.* 2001; 345: 1655-1659.
  21. Kronenberg M, Rudensky A. Regulation of immunity by self-reactive T cells. *Nature.* 2005; 435: 598-604.
  22. Molling JW, Kölgen W, van der Vliet HJ, Boomsma MF, Kruijenga H, Smorenburg CH, et al. Peripheral blood IFN-gamma-secreting V $\alpha$ 24+V $\beta$ 11+ NKT cell numbers are decreased in cancer patients independent of tumor type or tumor load. *Int J Cancer.* 2005; 116: 87-93.
  23. Molling JW, Langius JA, Langendijk JA, Leemans CR, Bontkes HJ, van der Vliet HJ, et al. Low levels of circulating invariant natural killer T cells predict poor clinical outcome in patients with head and neck squamous cell carcinoma. *J Clin Oncol.* 2007; 25: 862-868.
  24. van der Vliet HJ, Koon HB, Yue SC, Uzunparmak B, Seery V, Gavin MA, et al. Effects of the administration of high-dose interleukin-2 on immunoregulatory cell subsets in patients with advanced melanoma and renal cell cancer. *Clin Cancer Res.* 2007; 13: 2100-2108.
  25. Yang JC, Sherry RM, Steinberg SM, Topalian SL, Schwartzentruber DJ, Hwu P, et al. Randomized study of high-dose and low-dose interleukin-2 in patients with metastatic renal cancer. *J Clin Oncol.* 2003; 21: 3127-3132.
  26. West WH, Tauer KW, Yannelli JR, Marshall GD, Orr DW, Thurman GB, et al. Constant-infusion recombinant interleukin-2 in adoptive immunotherapy of advanced cancer. *N Engl J Med.* 1987; 316: 898-905.
  27. Negrier S, Escudier B, Lasset C, Douillard JY, Savary J, Chevreau C, et al. Recombinant human interleukin-2, recombinant human interferon alfa-2a, or both in metastatic renal-cell carcinoma. Groupe Français d'Immunothérapie. *N Engl J Med.* 1998; 338: 1272-1278.
  28. Atzpodien J, Kirchner H, Hänninen EL, Deckert M, Fenner M, Poliwoda H. Interleukin-2 in combination with interferon-alpha and 5-fluorouracil for metastatic renal cell cancer. *Eur J Cancer.* 1993; 29A Suppl 5: S6-8.
  29. Olencki T, Peereboom D, Wood L, Budd GT, Novick A, Finke J, et al. Phase I and II trials of subcutaneously administered rIL-2, interferon alfa-2a, and fluorouracil in patients with metastatic renal carcinoma. *J Cancer Res Clin Oncol.* 2001; 127: 319-324.
  30. van Herpen CM, Jansen RL, Kruit WH, Hoekman K, Groenewegen G, Osanto S, De Mulder PH. Immunotherapy with interleukin-2, interferon-alpha and 5-fluorouracil for progressive metastatic renal cell carcinoma: a multicenter phase II study. Dutch Immunotherapy Working Party. *Br J Cancer.* 2000; 82: 772-776.
  31. Lo Re G, Boccalon M, Sangiorgio A. Chemotherapy (CIT) with IL-2, IFN $\alpha$ 2a and 5-fluorouracil in metastatic renal cancer: a monoinstitutional confirmatory study. *Ann Oncol.* 2005; 16: 1-85.
  32. Gore ME, Griffin CL, Hancock B, Patel PM, Pyle L, Aitchison M, James N. Interferon alfa-2a versus combination therapy with interferon alfa-2a, interleukin-2, and fluorouracil in patients with untreated metastatic renal cell carcinoma (MRC RE04/EORTC GU 30012): an open-label randomised trial. *Lancet.* 2010; 375: 641-648.
  33. Mormont MC, Lévi F. Circadian-system alterations during cancer processes: a review. *Int J Cancer.* 1997; 70: 241-247.
  34. Chen D, Cheng J, Yang K, Ma Y, Yang F. Retrospective analysis of chronomodulated chemotherapy versus conventional chemotherapy with paclitaxel, carboplatin, and 5-fluorouracil in patients with recurrent and/or metastatic head and neck squamous cell carcinoma. *Onco Targets Ther.* 2013; 6: 1507-1514.



35. Lévi F, Okyar A, Dulong S, Innominato PF, Clairambault J. Circadian timing in cancer treatments. *Annu Rev Pharmacol Toxicol.* 2010; 50: 377-421.
36. Davidson AJ, Straume M, Block GD, Menaker M. Daily timed meals dissociate circadian rhythms in hepatoma and healthy host liver. *Int J Cancer.* 2006; 118: 1623-1627.
37. Sephton S, Spiegel D. Circadian disruption in cancer: a neuroendocrine-immune pathway from stress to disease? *Brain Behav Immun.* 2003; 17: 321-328.
38. Rich TA. Symptom clusters in cancer patients and their relation to EGFR ligand modulation of the circadian axis. *J Support Oncol.* 2007; 5: 167-174.
39. Reyes-Gibby CC, Wu X, Spitz M, Kurzrock R, Fisch M, Bruera E, et al. Molecular epidemiology, cancer-related symptoms, and cytokines pathway. *Lancet Oncol.* 2008; 9: 777-785.
40. Dhabhar FS. Enhancing versus suppressive effects of stress on immune function: implications for immunoprotection and immunopathology. *Neuroimmunomodulation.* 2009; 16: 300-317.
41. Dimitrov S, Lange T, Fehm HL, Born J. A regulatory role of prolactin, growth hormone, and corticosteroids for human T-cell production of cytokines. *Brain Behav Immun.* 2004; 18: 368-374.
42. Mazzoccoli G, Grilli M, Carughi S, Puzzolante F, De Cata A, La Viola M, et al. Immune system alterations in lung cancer patients. *Int J Immunopathol Pharmacol.* 2003; 16: 167-174.
43. Uthgenannt D, Schoolmann D, Pietrowsky R, Fehm HL, Born J. Effects of sleep on the production of cytokines in humans. *Psychosom Med.* 1995; 57: 97-104.
44. Spinazzé S, Viviani S, Bidoli P, Rovelli F, Palmer P, Franks CR, et al. Effect of prolonged subcutaneous administration of interleukin-2 on the circadian rhythms of cortisol and beta-endorphin in advanced small cell lung cancer patients. *Tumori.* 1991; 77: 496-499.
45. Palm S1, Postler E, Hinrichsen H, Maier H, Zabel P, Kirch W. Twenty-four-hour analysis of lymphocyte subpopulations and cytokines in healthy subjects. *Chronobiol Int.* 1996; 13: 423-434.
46. DeRijk R, Michelson D, Karp B. Exercise and circadian rhythm-induced variations in plasma cortisol differentially regulate interleukin-1 Beta (IL-1B), IL-6, and Tumor necrosis Factor- $\alpha$  (TNF $\alpha$ ) production in humans: high sensitivity of TNF $\alpha$  and resistance of IL-6. *J Clin Endocrinol Metab.* 1997; 82: 2182-2191.
47. Licinio J, Wong ML, Altemus M. Pulsatility of 24-hour concentrations of circulating Interleukin-1-alpha in healthy women: analysis of integrated basal levels, discrete pulse properties, and correlation with simultaneous interleukin-2 concentrations. *Neuroimmunomodulation.* 1994; 1: 242-50.
48. Simon R. Optimal two-stage designs for phase II clinical trials. *Control Clin Trials.* 1989; 10: 1-10.
49. Armitage P, Berry B. Statistical methods in medical research. Blackwell Sc Publications. 1987.
50. Upton MP, Parker RA, Youmans A, McDermott DF, Atkins MB. Histologic predictors of renal cell carcinoma response to interleukin-2-based therapy. *J Immunother.* 2005; 28: 488-495.
51. Klapper JA, Downey SG, Smith FO, Yang JC, Hughes MS, Kammula US, Sherry RM. High-dose interleukin-2 for the treatment of metastatic renal cell carcinoma: a retrospective analysis of response and survival in patients treated in the surgery branch at the National Cancer Institute between 1986 and 2006. *Cancer.* 2008; 113: 293-301.
52. Dillman RO, Barth NM, VanderMolen LA, Fong WH, Mahdavi KK, McClure SE. Should High-Dose Interleukin-2 Still be the Preferred Treatment for Patients with Metastatic Renal Cell Cancer? *Cancer Biother Radiopharm.* 2011; 26: 273-277.
53. Motzer RJ, Bacik J, Schwartz LH, Reuter V, Russo P, Marion S, Mazumdar M. Prognostic factors for survival in previously treated patients with metastatic renal cell carcinoma. *J Clin Oncol.* 2004; 22: 454-463.
54. Mekhail TM, Abou-Jawde RM, Boumerhi G, Malhi S, Wood L, Elson P, et al. Validation and extension of the Memorial Sloan-Kettering prognostic factors model for survival in patients with previously untreated metastatic renal cell carcinoma. *J Clin Oncol.* 2005; 23: 832-834.
55. Gez E, Rubinov R, Gaitini D, Meretyk S, Best LA, Mashlach T, et al. Immuno-chemotherapy in metastatic renal cell carcinoma: long-term results from the rambam and linn medical centers, Haifa, Israel. *J Chemother.* 2007; 19: 79-84.
56. McDermott DF, Regan MM, Clark JI, Flaherty LE, Weiss GR, Logan TF, et al. Randomized phase III trial of high-dose interleukin-2 versus subcutaneous interleukin-2 and interferon in patients with metastatic renal cell carcinoma. *J Clin Oncol.* 2005; 23: 133-141.
57. Woodward E, Jagdev S, McParland L, Clark K, Gregory W, Newsham A, et al. Skeletal complications and survival in renal cancer patients with bone metastases. *Bone.* 2011; 48: 160-166.
58. Common Terminology Criteria for Adverse Events v3.0 (CTCAE) Publish Date: August 9, 2006.
59. McDermott F, Ghebremichael MS, Signoretti S, Margolin KA, Clark J, Sosman JA, et al. The high-dose aldesleukin (HD IL-2) "SELECT" trial in patients with metastatic renal cell carcinoma (mRCC). *J Clin Oncol.* 2010; 28: 4514.
60. Jonasch E, Hutson TE, Lauren C, Srinivas S. Advanced Renal Cell Carcinoma: Overview Drug Therapy for the Practicing Physician. *J Clin Oncol Educational book,* 2011.
61. Giacchetti S, Dugué PA, Innominato PF, Bjarnason GA, Focan C, Garufi C, et al. Sex moderates circadian chemotherapy effects on survival of patients with metastatic colorectal cancer: a meta-analysis. *Ann Oncol.* 2012; 23: 3110-3116.
62. Jeong IG, Han KS, Joung JY, Choi WS, Hwang SS, Yang SO, et al. Analysis of changes in the total lymphocyte and eosinophil count during immunotherapy for metastatic renal cell carcinoma: correlation with response and survival. *J Korean Med Sci.* 2007; 22 Suppl: S122-128.
63. Finke JH, Rini B, Ireland J, Rayman P, Richmond A, Golshayan A, et al. Sunitinib reverses type-1 immune suppression and decreases T-regulatory cells in renal cell carcinoma patients. *Clin Cancer Res.* 2008; 14: 6674-6682.
64. Ko JS, Zea AH, Rini BI, Ireland JL, Elson P, Cohen P, et al. Sunitinib mediates reversal of myeloid-derived suppressor cell accumulation in renal cell carcinoma patients. *Clin Cancer Res.* 2009; 15: 2148-2157.
65. Cho DC, Puzanov I, Regan MM, Schwarzberg T, Seery V, Lee MY, et al. Retrospective analysis of the safety and efficacy of interleukin-2 after prior VEGF-targeted therapy in patients with advanced renal cell carcinoma. *J Immunother.* 2009; 32: 181-185.

## Cite this article

Giovanni Lo Re<sup>1</sup>, Davide Adriano Santeufemia<sup>1</sup>, Giovanni Maria Fadda<sup>2</sup>, Renato Talamini<sup>3</sup>, Wally Marus, et al. (2014) Chrono-Immunotherapy with Interleukin-2 for Treatment of Metastatic Renal Cell Carcinoma: A Phase I-II Study. *J Immunol Clin Res* 2(2): 1024.